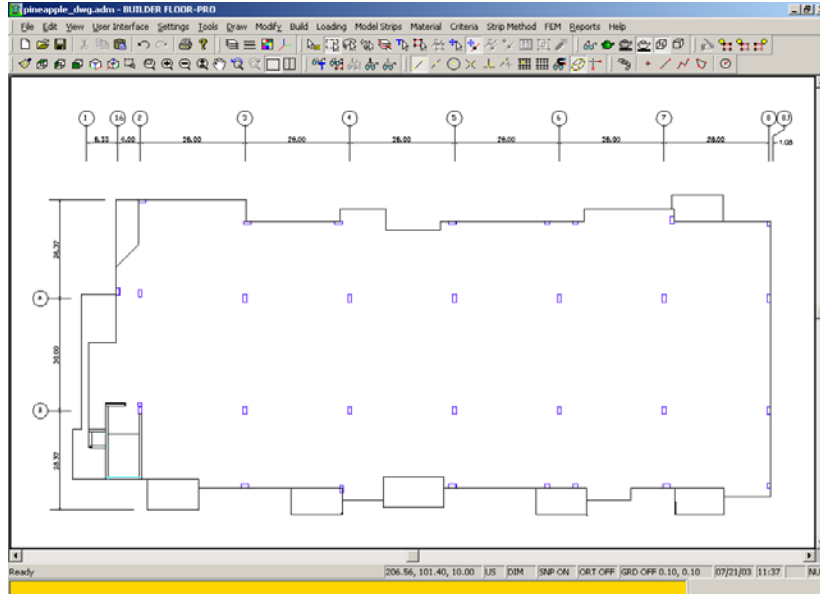
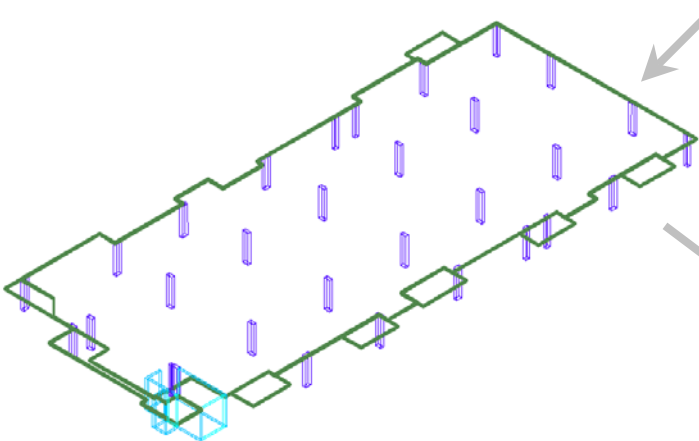


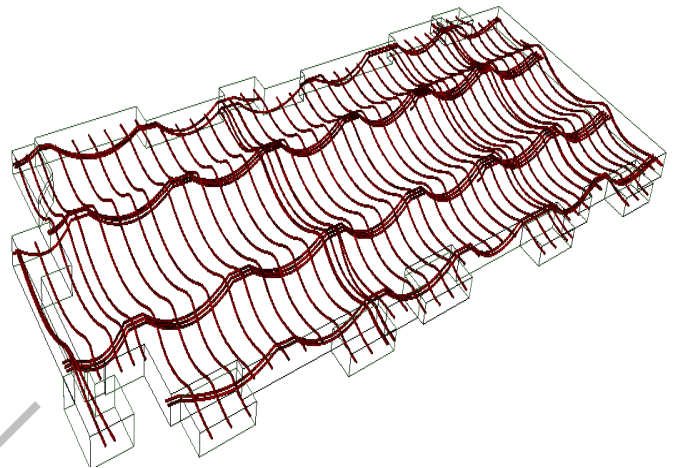
ADAPT-Floor Pro DESIGN PROCESS



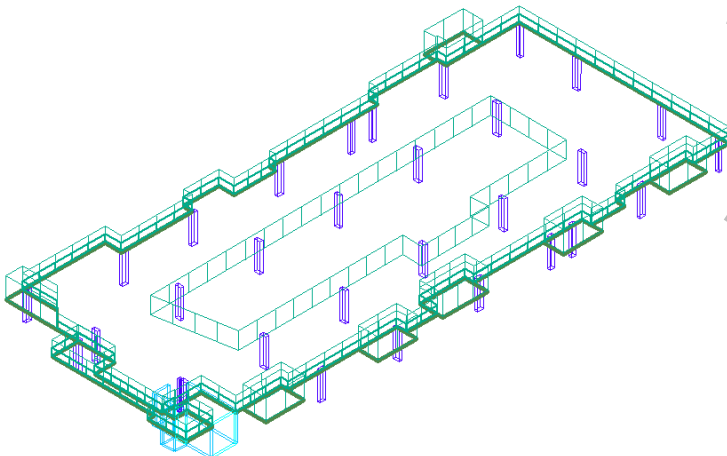
(a) DWG file imported into **ADAPT-Modeler**.



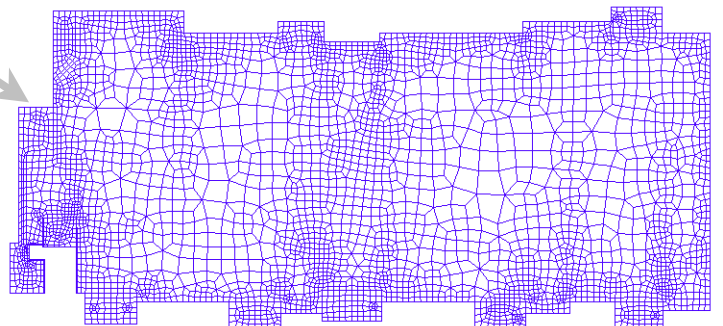
(b) Imported drawing is converted into **structural components**.



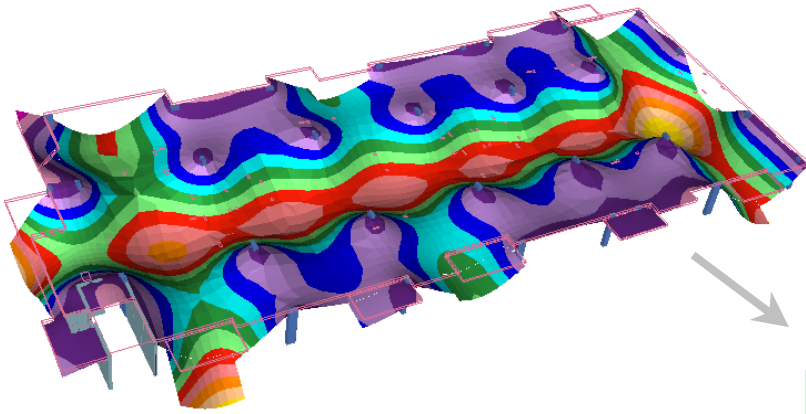
(c) Post-tensioning **tendons** are generated.



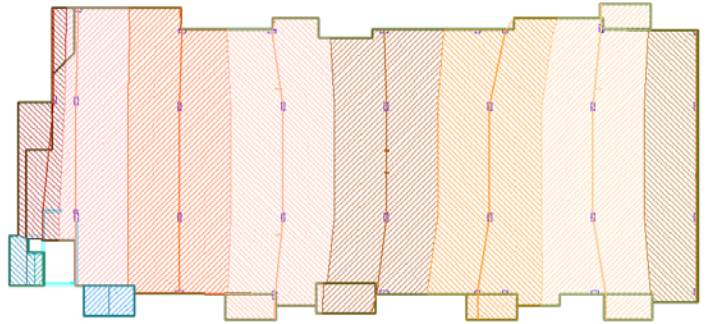
(d) **Loads** are applied on the structure and **load combinations** are generated.



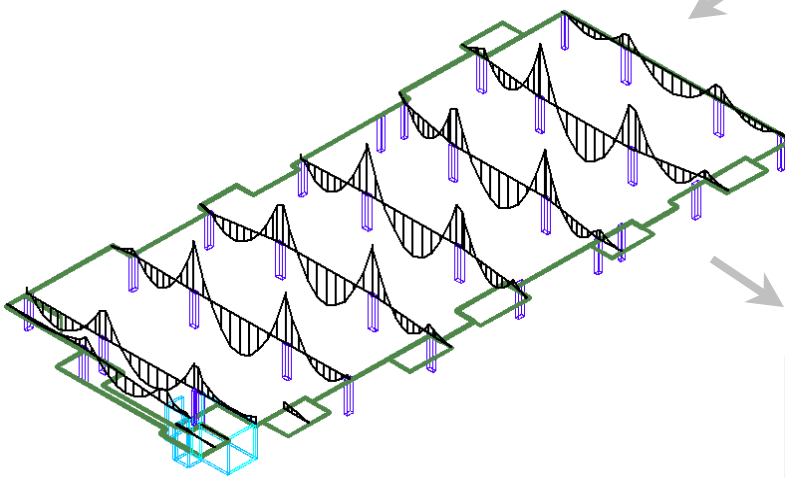
(e) **Finite Element mesh** is generated automatically in **ADAPT-Floor Pro**.



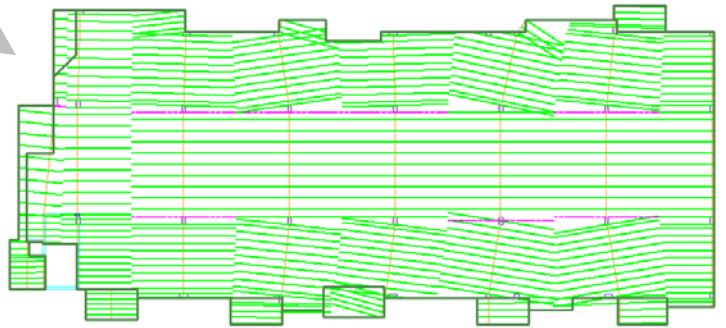
(f) **Deflected shape contour** from Finite Element Method (FEM) demonstrates behavior of structure.



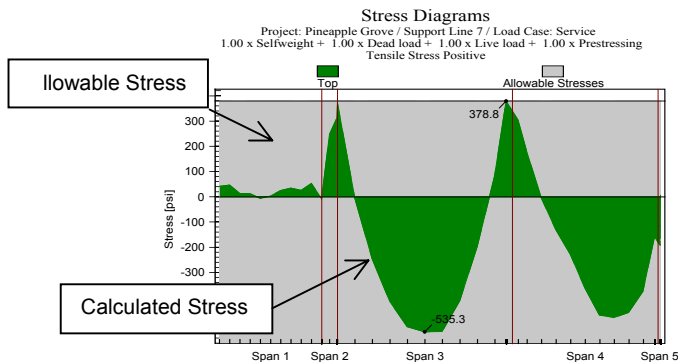
(g) **Design Strips** are generated in two orthogonal directions.



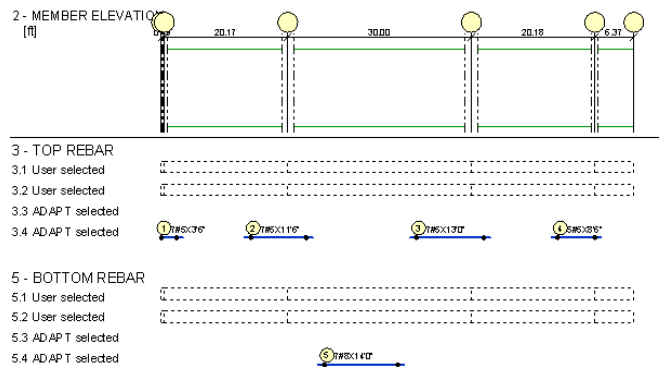
(h) Using FEM results, **design moments** are evaluated for each Design Strip.



(i) Design Sections are generated automatically for **stress check**. Calculated stresses and compared with allowable values. Red lines (or broken lines) indicate regions where code values are exceeded.



(j) **Calculated stresses** for each Design Strip can be superimposed on the **allowable stress envelope**.



(k) Reinforcement for each design strip is automatically selected by the program and displayed, specifying the location, number and length of bars